

# PARTNER COPY STRATEGY

## FIRST REWARD COMMISSION ON PROFITS

Copy strategies are charged a profit fee, which in most cases is set at 30% of the profit made in the Investor's account / charged on a monthly basis. This fee is then split 50/50 between the Trader of the copy strategy and the Partner - the person who recommended the strategy to the Investor.

DISTRIBUTION  
OF PROFITS  
100 %

70 %  
INVESTOR



15 %  
PARTNER

Connecting the investor via a  
special invitation link.



15 %  
TRADER COPY  
STRATEGIES



All information provided here is for information purposes only. Trading in financial derivatives carries a high level of risk that may not be suitable for all investors. The use of leverage may cause risk and loss of all capital. Before deciding to join a leverage strategy, assess the level of risk yourself and do not trade more capital than you can afford to lose. Risk capital is money that will not jeopardize your cost of living. Past performance does not guarantee future profits. The information herein does not guarantee profits and is subject to change without notice.

# EXAMPLE OF COMMISSION ON PROFIT

1 INVESTOR IN 1 MONTH AT A PROFIT OF 8%

TOTAL PROFIT  
\$80

## CALCULATION

Starting investment \$1 000 → 8% profit = \$80  
Averaged values were used for the calculation. The final result is only informative and may vary depending on the choice of copy strategy and financial results.

\$56  
INVESTOR



\$12  
PARTNER



\$12  
TRADER COPY  
STRATEGIES



# EXAMPLE OF COMMISSION ON PROFIT

10 INVESTORS IN 1 MONTH AT 8% PROFIT

TOTAL PROFIT  
\$4 800

\$3 360  
INVESTORS



\$720  
PARTNER



\$720  
TRADER COPY  
STRATEGIES



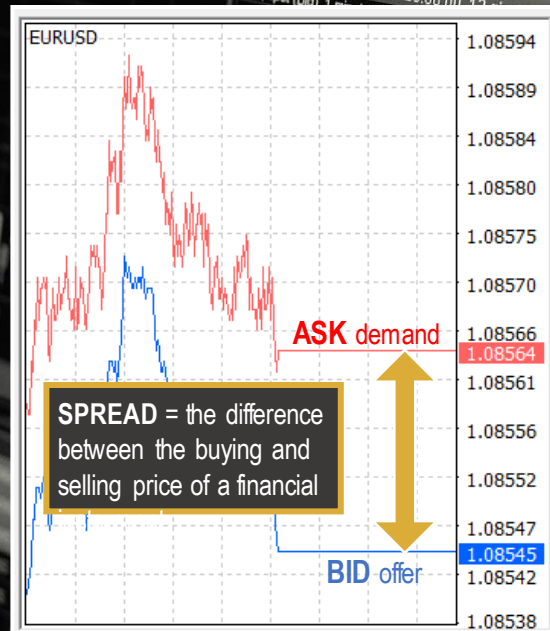
## CALCULATION

Starting investment 5x \$1 000 → 8% profit = \$400  
Starting investment 3x \$5 000 → 8% profit = \$1 200  
Starting investment 2x \$20 000 → 8% profit = \$3 200  
Averaged values were used for the calculation. The final result is only informative and may vary depending on the choice of copy strategy and financial results.

# PARTNER COPY STRATEGY

## SECOND REWARD COMMISSION ON SPREAD (TRADED LOTS)

The main income of RoboForex broker, where we trade copy strategies, is of course fees from the trades made on clients' trading accounts. The fee is basically the SPREAD - i.e. the difference between the buying and selling price of the financial instrument. RoboForex shares this profit with its clients who recommend RoboForex to other clients and has created a reward system or affiliate program for this purpose.



The investor creates a trading account with **RoboForex** through your special invitation



All information provided here is for information purposes only. Trading in financial derivatives carries a high level of risk that may not be suitable for all investors. The use of leverage may cause risk and loss of all capital. Before deciding to join a leverage strategy, assess the level of risk yourself and do not trade more capital than you can afford to lose. Risk capital is money that will not jeopardize your cost of living. Past performance does not guarantee future profits. The information herein does not guarantee profits and is subject to change without notice.

# PARTNER COPY STRATEGY

## SECOND REWARD COMMISSION ON SPREAD (TRADED LOTS)

**INFINITY**

2 levels

TYPE OF  
AFFILIATE  
PROGRAM

**EXPERT**

5 levels

Ex. EUR/USD closed 1 lot, account Pro  
Total commission **\$9.68**

Level 1

**\$8.8**

Level 2

**\$0.88**

Commissions vary depending on the type of account  
and the instrument traded.

Ex. EUR/USD closed 1 lot, account Pro  
Total commission **\$7.17**

Level 1

**\$4.55**

Level 2

**\$0.91**

Level 3

**\$0.68**

Level 4

**\$0.57**

Level 5

**\$0.46**

Commissions vary depending on the type of account  
and the instrument traded.

Our copy strategies close  
trades of approximately  
the size of  
approximately **0.5 to 1.5**  
**lots** for every \$1,000.



All information provided here is for information purposes only. Trading in financial derivatives carries a high level of risk that may not be suitable for all investors. The use of leverage may cause risk and loss of all capital. Before deciding to join a leverage strategy, assess the level of risk yourself and do not trade more capital than you can afford to lose. Risk capital is money that will not jeopardize your cost of living. Past performance does not guarantee future profits. The information herein does not guarantee profits and is subject to change without notice.

Updated 25.4. 2024

# EXAMPLE OF SPREAD COMMISSION (FROM TRAD. LOT.)

## 1 INVESTOR IN 1 MONTH AT 8% PROFIT

### CALCULATION

Starting investment \$1 000 → 1 lot =  $1 \times 8.8 = \$8.8$

For the calculation we used Infinity affiliate program, Pro account, EUR/USD instrument and first level commission. Averaged values were used. The final result is only informative and may vary depending on the choice of copy strategy and financial results.



**\$8.8**  
**PARTNER**



## 10 INVESTORS IN 1 MONTH AT 8% PROFIT

### CALCULATION

Starting investment 5x \$1 000 →  $5 \times 1 \text{ lot} = 5 \times 8.8 = \$44$

Starting investment 3x \$5 000 →  $3 \times 5 \text{ lots} = 15 \times 8.8 = \$132$

Starting investment 2x \$20 000 →  $2 \times 20 \text{ lots} = 40 \times 8.8 = \$352$

For the calculation we used Infinity affiliate program, Pro account, EUR/USD instrument and first level commission. Averaged values were used. The final result is only informative and may vary depending on the choice of copy strategy and financial results.



**\$528**  
**PARTNER**

